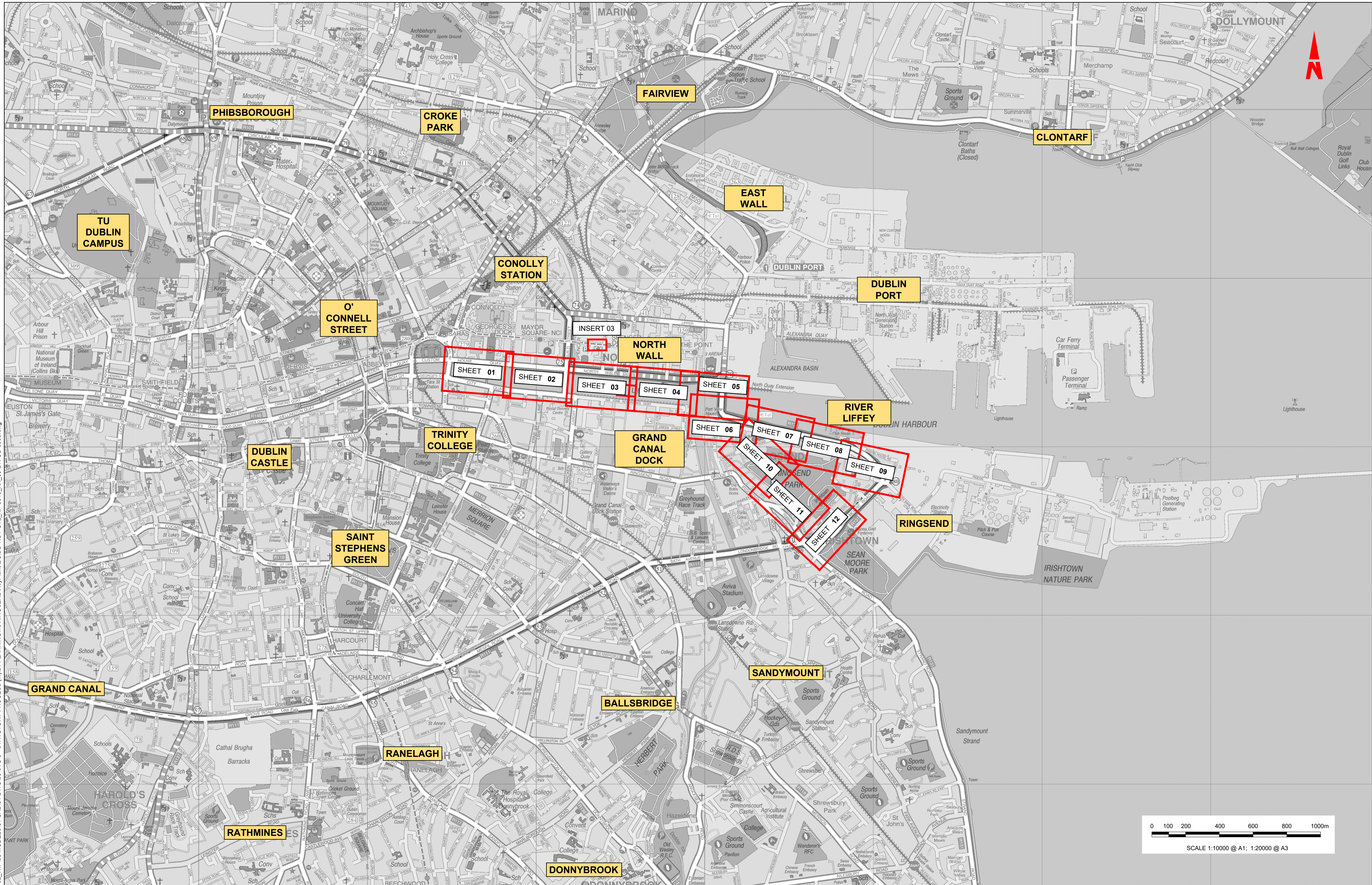


IW Water Asset
Alterations

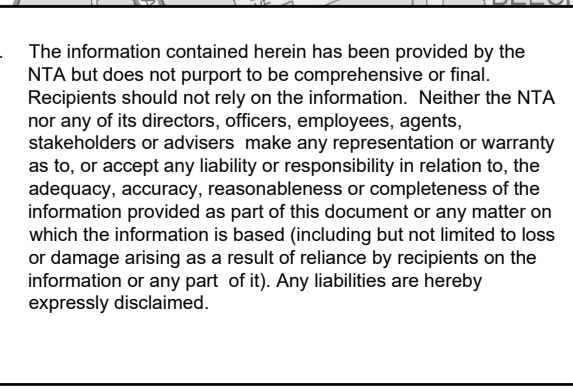




W:\000000\1917117-02_WIP\08 MODELS\01 CAD\01 PLANNING\16 RINGSEND\KEY\Plans\BCIDD-ROT-UTL_KP-0016_XX_00-DR-CU-0006.dwg
 W:\000000\1917117-02_WIP\08 MODELS\01 CAD\01 PLANNING\16 RINGSEND\KEY\Plans\BCIDD-ROT-UTL_KP-0016_XX_00-DR-CU-0006.dwg

Disclaimer
 a. © National Transport Authority (NTA) 2022. This drawing is confidential and the copyright in it is owned by NTA. This drawing must not be either loaned, copied or otherwise reproduced in whole or in part or used for any purpose without the prior permission of NTA.
 b. This drawing is to be used for the design element identified in the title block. Other information shown is to be considered indicative only. The drawing is to be read in conjunction with all other relevant design drawings.
 c. O.S. data used for plans are printed under © Ordnance Survey Ireland Government of Ireland. All rights reserved. Licence Number 2022/OSI_NMA_180 National Transport Authority. All elevations are in metres and relate to OSi Geoid Model (OSGM15) Mean Head. All Co-ordinates are in Irish Transverse Mercator Grid (ITM) as defined by OSI active local GPS station.
 d. Information concerning the position of apparatus shown on this drawing is based on the information supplied by the utility owners and/or the utility works contractor, whilst every care has been taken in the preparation of this drawing, positions should be taken as approximate and are provided for general guidance only and no representation is made by the NTA as to the accuracy, completeness, sufficiency or otherwise of this information. The information contained herein does not purport to be comprehensive or final as the apparatus is subject to being altered and/or superseded. Recipients should not rely on this information. Any liabilities are hereby expressly disclaimed.

The information contained herein has been provided by the NTA but does not purport to be comprehensive or final. Recipients should not rely on the information. Neither the NTA nor any of its directors, officers, employees, agents, stakeholders or advisers make any representation or warranty as to, or accept any liability or responsibility in relation to, the adequacy, accuracy, reasonableness or completeness of the information provided as part of this document or any matter on which the information is based (including but not limited to loss or damage arising as a result of reliance by recipients on the information or any part of it). Any liabilities are hereby expressly disclaimed.



Rev	Date	Drn	Chk'd	App'd	Description
M01	MAR 2023	DS	EOC	SMG	ISSUE FOR PHASE 4: PLANNING

Client

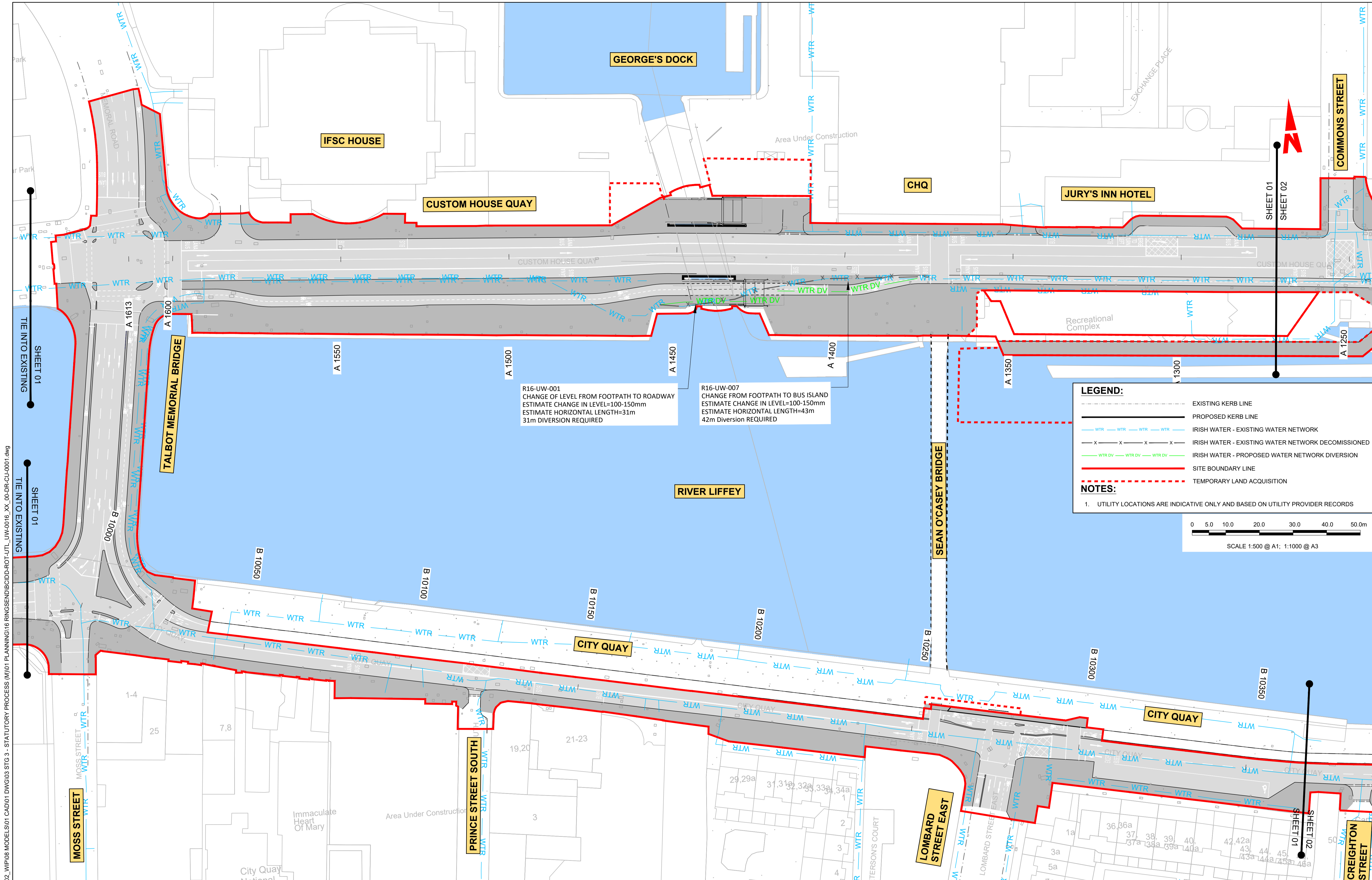
Date: MAR 2023
 Scale: 1:10,000 @ A1
 1:20,000 @ A3

Programme Code: BCIDD
 Originator Code: ROT

Engineering Designer		
Drawn	Checked	Approved
DS	EOC	SMG

Programme Title			
BUSCONNECTS DUBLIN CORE BUS CORRIDORS INFRASTRUCTURE WORKS			
Drawing Title			
RINGSEND TO CITY CENTRE CORE BUS CORRIDOR SCHEME IW WATER ASSET ALTERATIONS KEYPLAN			
Drawing File Name		Sheet Number	Status
BCIDD-ROT-UTL_KP-0016_XX_00-DR-CU-0006		01 of 01	A
Rev		M01	

DO NOT SCALE USE FIGURED DIMENSIONS ONLY



R16-UW-001
CHANGE OF LEVEL FROM FOOTPATH TO ROADWAY
ESTIMATE CHANGE IN LEVEL=100-150mm
ESTIMATE HORIZONTAL LENGTH=31m
31m DIVERSION REQUIRED

R16-UW-007
CHANGE FROM FOOTPATH TO BUS ISLAND
ESTIMATE CHANGE IN LEVEL=100-150mm
ESTIMATE HORIZONTAL LENGTH=43m
42m DIVERSION REQUIRED

LEGEND:

- EXISTING KERB LINE
- PROPOSED KERB LINE
- IRISH WATER - EXISTING WATER NETWORK
- IRISH WATER - EXISTING WATER NETWORK DECOMMISSIONED
- IRISH WATER - PROPOSED WATER NETWORK DIVERSION
- SITE BOUNDARY LINE
- TEMPORARY LAND ACQUISITION

NOTES:

- UTILITY LOCATIONS ARE INDICATIVE ONLY AND BASED ON UTILITY PROVIDER RECORDS

0 5.0 10.0 20.0 30.0 40.0 50.0m
SCALE 1:500 @ A1; 1:1000 @ A3

\\p001\p1\2019\1717\1717-02_WIP\08 MODELS\01 CAD\01 DWG\03 STG 3 - STATUTORY PROCESS (M)\01 PLANNING\16 RINGSEND\BCIDD-ROT-UTL_UW-0016_XX_00-DR-CU-0001.dwg

Disclaimer

a. © National Transport Authority (NTA) 2022. This drawing is confidential and the copyright in it is owned by NTA. This drawing must not be either loaned, copied or otherwise reproduced in whole or in part or used for any purpose without the prior permission of NTA.

b. This drawing is to be used for the design element identified in the titleblock. Other information shown is to be considered indicative only. The drawing is to be read in conjunction with all other relevant design drawings.

c. O.S. data used for plans are printed under © Ordnance Survey Ireland Government of Ireland. All rights reserved. Licence Number 2022/OSI_NMA_180 National Transport Authority. All elevations are in metres and relate to OSI Geoid Model (OSGM15) Mean Head. All Co-ordinates are in Irish Transverse Mercator Grid (ITM) as defined by OSI active local GPS station.

d. Information concerning the position of apparatus shown on this drawing is based on drawings supplied by the utility owners and/or the utility works contractor, whilst every care has been taken in the preparation of this drawing, positions should be taken as approximate and are intended for general guidance only and no representation is made by the NTA as to the accuracy, completeness, sufficiency or otherwise of this drawing and the position of the apparatus. The information contained herein does not purport to be comprehensive or final as the apparatus is subject to being altered and/or superceded. Recipients should not rely on this information. Any liabilities are hereby expressly disclaimed.

e. The information contained herein has been provided by the NTA but does not purport to be comprehensive or final. Recipients should not rely on the information. Neither the NTA nor any of its directors, officers, employees, agents, stakeholders or advisers make any representation or warranty as to, or accept any liability or responsibility in relation to, the adequacy, accuracy, reasonableness or completeness of the information provided as part of this document or any matter on which the information is based (including but not limited to loss or damage arising as a result of reliance by recipients on the information or any part of it). Any liabilities are hereby expressly disclaimed.

Project Ireland 2040
Building Ireland's Future

Rev	Date	Drn	Chk'd	App'd	Description
M01	MAR 2023	DS	EOC	SMG	ISSUE FOR PHASE 4: PLANNING

Client: **NTA**
Údarás Náisiúnta Iompair
National Transport Authority

Engineering Designer: **CIROD**
CIROD TYPSA

Date: MAR 2023
Scale: 1:500 @ A1
1:1000 @ A3

Drawn: DS
Checked: EOC
Approved: SMG

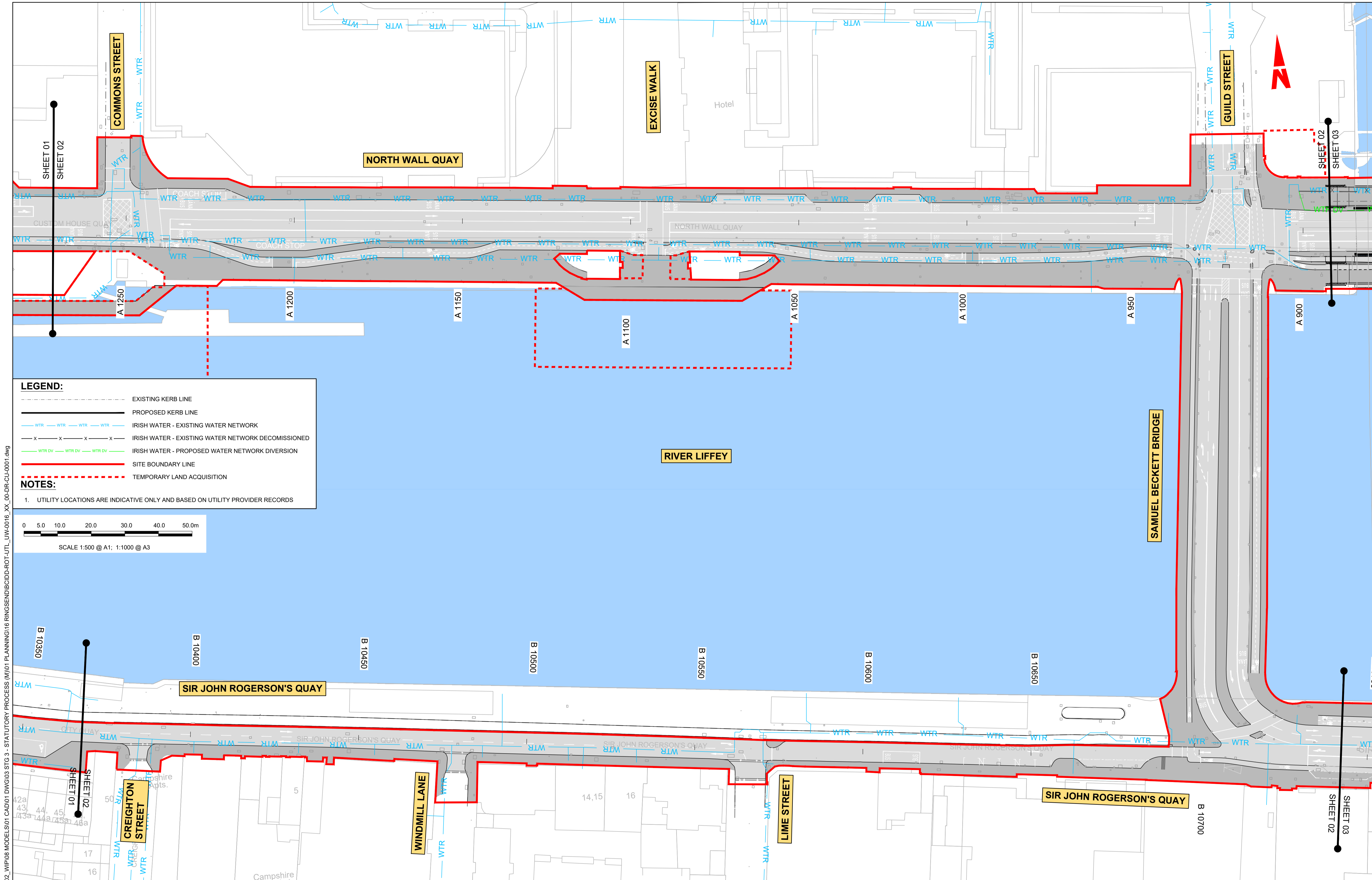
Programme Code: BCIDD
Originator Code: ROT
QMS Code:

Programme Title: **BUSCONNECTS DUBLIN**
CORE BUS CORRIDORS INFRASTRUCTURE WORKS

Drawing Title: RINGSEND TO CITY CENTRE CORE BUS CORRIDOR SCHEME
IW WATER ASSET ALTERATIONS

Drawing File Name: BCIDD-ROT-UTL_UW-0016_XX_00-DR-CU-0001
Sheet Number: 01 of 12
Status: A
Rev: M01

DO NOT SCALE USE FIGURED DIMENSIONS ONLY

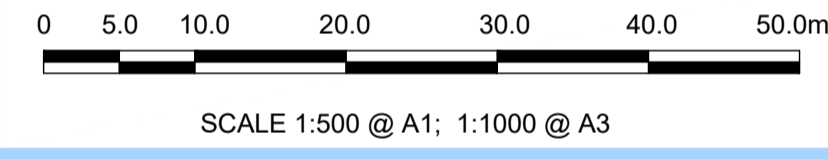


LEGEND:

- EXISTING KERB LINE
- PROPOSED KERB LINE
- WTR IRISH WATER - EXISTING WATER NETWORK
- WTR IRISH WATER - EXISTING WATER NETWORK DECOMMISSIONED
- WTR DV IRISH WATER - PROPOSED WATER NETWORK DIVERSION
- SITE BOUNDARY LINE
- - - - - TEMPORARY LAND ACQUISITION

NOTES:

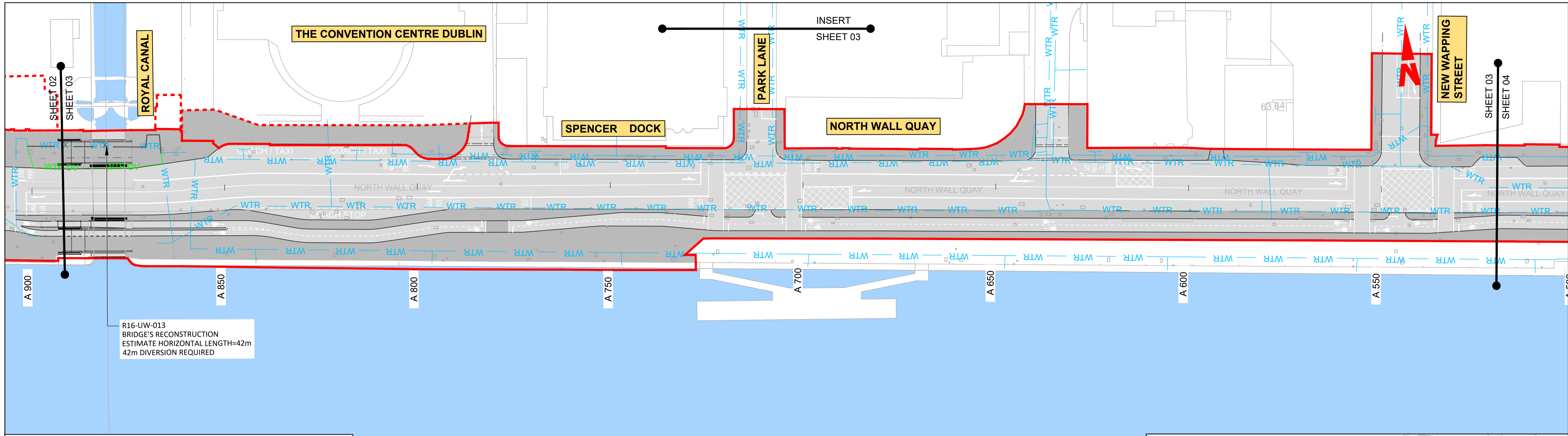
- UTILITY LOCATIONS ARE INDICATIVE ONLY AND BASED ON UTILITY PROVIDER RECORDS



W:\000000\19171717-02_WIP\08 MODELS\01 CAD\01 DWG\03 STG 3 - STATUTORY PROCESS (M)\01 PLANNING\16 RINGSEND\BCIDD-ROT-UTL_UW-0016_XX_00-DR-CU-0001.dwg

<p><small>Disclaimer</small></p> <p>a. © National Transport Authority (NTA) 2022. This drawing is confidential and the copyright in it is owned by NTA. This drawing must not be either loaned, copied or otherwise reproduced in whole or in part or used for any purpose without the prior permission of NTA.</p> <p>b. This drawing is to be used for the design element identified in the titleblock. Other information shown is to be considered indicative only. The drawing is to be read in conjunction with all other relevant design drawings.</p> <p>c. O.S. data used for plans are printed under © Ordnance Survey Ireland Government of Ireland. All rights reserved. Licence Number 2022/OSI_NMA_180 National Transport Authority. All elevations are in metres and relate to OSI Geoid Model (OSGM15) Mean Head. All Co-ordinates are in Irish Transverse Mercator Grid (ITM) as defined by OSI active local GPS station.</p> <p>d. Information concerning the position of apparatus shown on this drawing is based on drawings supplied by the utility owners and/or the utility works contractor, whilst every care has been taken in the preparation of this drawing, positions should be taken as approximate and are intended for general guidance only and no representation is made by the NTA as to the accuracy, completeness, sufficiency or otherwise of this drawing and the position of the apparatus. The information contained herein does not purport to be comprehensive or final as the apparatus is subject to being altered and/or superceded. Recipients should not rely on this information. Any liabilities are hereby expressly disclaimed.</p> <p>e. The information contained herein has been provided by the NTA but does not purport to be comprehensive or final. Recipients should not rely on the information. Neither the NTA nor any of its directors, officers, employees, agents, stakeholders or advisers make any representation or warranty as to, or accept any liability or responsibility in relation to, the adequacy, accuracy, reasonableness or completeness of the information provided as part of this document or any matter on which the information is based (including but not limited to loss or damage arising as a result of reliance by recipients on the information or any part of it). Any liabilities are hereby expressly disclaimed.</p>	<p>Rev M01</p> <p>Date MAR 2023</p> <p>Drm DS</p> <p>Chk'd EOC</p> <p>App'd SMG</p> <p>Description</p> <p>ISSUE FOR PHASE 4: PLANNING</p>	<p>Client</p> <p>NTA</p> <p>Údarás Náisiúnta Iompair</p> <p>National Transport Authority</p>	<p>Engineering Designer</p> <p>CIROD</p> <p>TYPSA</p>	<p>Programme Title</p> <p>BUSCONNECTS DUBLIN</p> <p>CORE BUS CORRIDORS INFRASTRUCTURE WORKS</p>
	<p>Date MAR 2023</p> <p>Scale 1:500 @ A1 1:1000 @ A3</p> <p>Programme Code BCIDD</p> <p>Originator Code ROT</p> <p>QMS Code</p>	<p>Drawn DS</p> <p>Checked EOC</p> <p>Approved SMG</p>	<p>Drawing Title</p> <p>RINGSEND TO CITY CENTRE CORE BUS CORRIDOR SCHEME</p> <p>IW WATER ASSET ALTERATIONS</p>	<p>Drawing File Name</p> <p>BCIDD-ROT-UTL_UW-0016_XX_00-DR-CU-0002</p> <p>Sheet Number 02 of 12</p> <p>Status A</p> <p>Rev M01</p>

DO NOT SCALE USE FIGURED DIMENSIONS ONLY



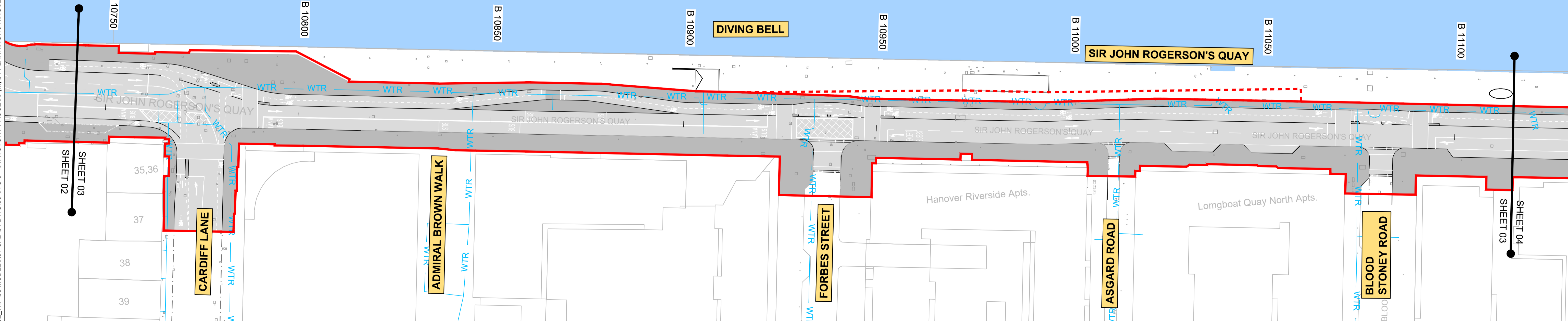
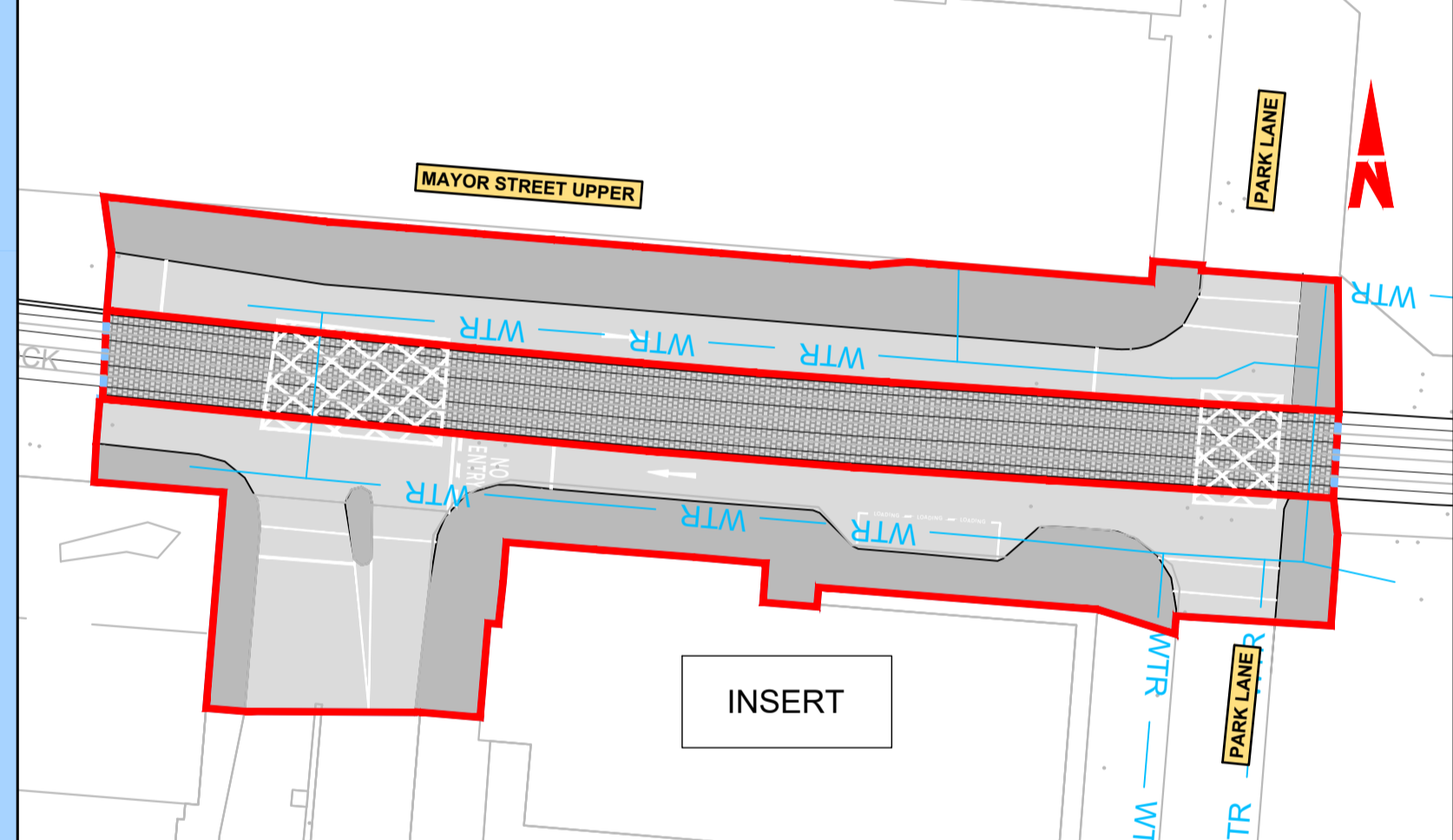
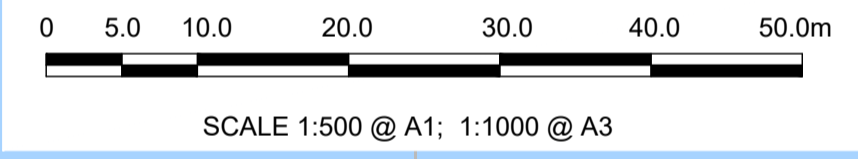
R16-UW-013
BRIDGE'S RECONSTRUCTION
ESTIMATE HORIZONTAL LENGTH=42m
42m DIVERSION REQUIRED

LEGEND:

- EXISTING KERB LINE
- PROPOSED KERB LINE
- WTR IRISH WATER - EXISTING WATER NETWORK
- WTR IRISH WATER - EXISTING WATER NETWORK DECOMMISSIONED
- WTR DV IRISH WATER - PROPOSED WATER NETWORK DIVERSION
- SITE BOUNDARY LINE
- TEMPORARY LAND ACQUISITION

NOTES:

- UTILITY LOCATIONS ARE INDICATIVE ONLY AND BASED ON UTILITY PROVIDER RECORDS



Disclaimer

a. © National Transport Authority (NTA) 2022. This drawing is confidential and the copyright in it is owned by NTA. This drawing must not be either loaned, copied or otherwise reproduced in whole or in part or used for any purpose without the prior permission of NTA.

b. This drawing is to be used for the design element identified in the titleblock. Other information shown is to be considered indicative only. The drawing is to be read in conjunction with all other relevant design drawings.

c. O.S. data used for plans are printed under © Ordnance Survey Ireland Government of Ireland. All rights reserved. Licence Number 2022/OSI_NMA_180 National Transport Authority. All elevations are in metres and relate to OSI Geoid Model (OSGM15) Mean Head. All Co-ordinates are in Irish Transverse Mercator Grid (ITM) as defined by OSI active local GPS station.

d. Information concerning the position of apparatus shown on this drawing is based on drawings supplied by the utility owners and/or the utility works contractor, whilst every care has been taken in the preparation of this drawing, positions should be taken as approximate and are intended for general guidance only and no representation is made by the NTA as to the accuracy, completeness, sufficiency or otherwise of this drawing and the position of the apparatus. The information contained herein does not purport to be comprehensive or final as the apparatus is subject to being altered and/or superceded. Recipients should not rely on this information. Any liabilities are hereby expressly disclaimed.

e. The information contained herein has been provided by the NTA but does not purport to be comprehensive or final. Recipients should not rely on the information. Neither the NTA nor any of its directors, officers, employees, agents, stakeholders or advisers make any representation or warranty as to, or accept any liability or responsibility in relation to, the adequacy, accuracy, reasonableness or completeness of the information provided as part of this document or any matter on which the information is based (including but not limited to loss or damage arising as a result of reliance by recipients on the information or any part of it). Any liabilities are hereby expressly disclaimed.

Rev	Date	Drn	Chk'd	App'd	Description
M01	MAR 2023	DS	EOC	SMG	ISSUE FOR PHASE 4: PLANNING

Client: **NTA**
Údarás Náisiúnta Iompair
National Transport Authority

Engineering Designer: **CIROD**
TYPSA

Date: MAR 2023
Scale: 1:500 @ A1, 1:1000 @ A3

Drawn: DS
Checked: EOC
Approved: SMG

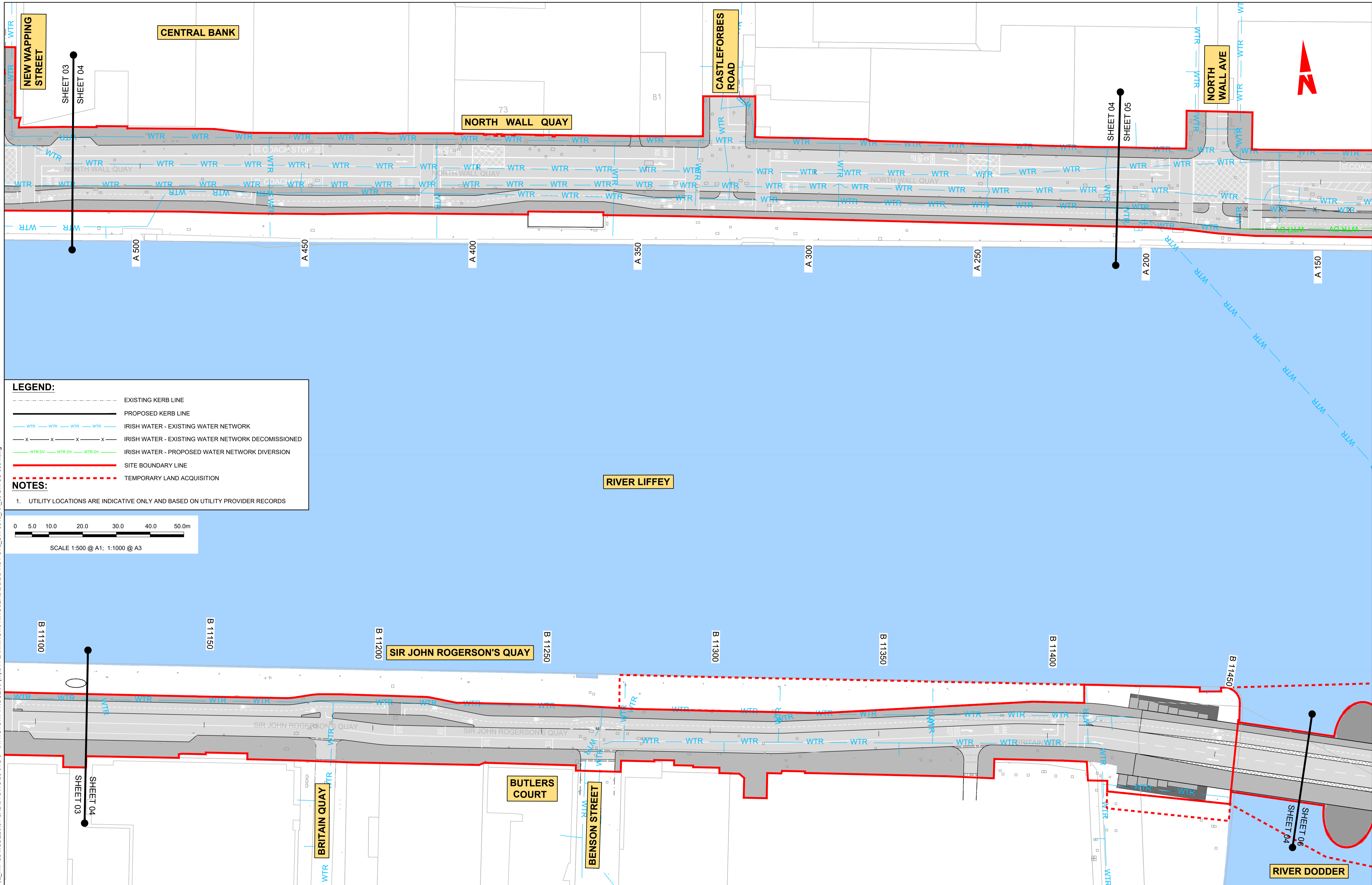
Programme Code: BCIDD
Originator Code: ROT

QMS Code:

Programme Title: BUSCONNECTS DUBLIN CORE BUS CORRIDORS INFRASTRUCTURE WORKS			
Drawing Title: RINGSEND TO CITY CENTRE CORE BUS CORRIDOR SCHEME IW WATER ASSET ALTERATIONS			
Drawing File Name: BCIDD-ROT-UTL_UW-0016_XX_00-DR-CU-0003	Sheet Number: 03 of 12	Status: A	Rev: M01

DO NOT SCALE USE FIGURED DIMENSIONS ONLY

\\nodubp1u201919171717-02_WIP08 MODELS01 CAD01 DWG03 STG 3 - STATUTORY PROCESS (M)01 PLANNING\16 RINGSEND\BCIDD-ROT-UTL_UW-0016_XX_00-DR-CU-0001.dwg

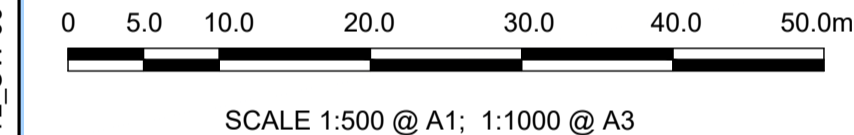


LEGEND:

- EXISTING KERB LINE
- PROPOSED KERB LINE
- WTR IRISH WATER - EXISTING WATER NETWORK
- X X X X X IRISH WATER - EXISTING WATER NETWORK DECOMMISSIONED
- WTR DV IRISH WATER - PROPOSED WATER NETWORK DIVERSION
- SITE BOUNDARY LINE
- - - - - TEMPORARY LAND ACQUISITION

NOTES:

- UTILITY LOCATIONS ARE INDICATIVE ONLY AND BASED ON UTILITY PROVIDER RECORDS



Disclaimer

a. © National Transport Authority (NTA) 2022. This drawing is confidential and the copyright in it is owned by NTA. This drawing must not be either loaned, copied or otherwise reproduced in whole or in part or used for any purpose without the prior permission of NTA.

b. This drawing is to be used for the design element identified in the titlebox. Other information shown is to be considered indicative only. The drawing is to be read in conjunction with all other relevant design drawings.

c. O.S. data used for plans are printed under © Ordnance Survey Ireland Government of Ireland. All rights reserved. Licence Number 2022/OSI_NMA_180 National Transport Authority. All elevations are in metres and relate to OSI Geoid Model (OSGM15) Mean Head. All Co-ordinates are in Irish Transverse Mercator Grid (ITM) as defined by OSI active local GPS station.

d. Information concerning the position of apparatus shown on this drawing is based on drawings supplied by the utility owners and/or the utility works contractor, whilst every care has been taken in the preparation of this drawing, positions should be taken as approximate and are intended for general guidance only and no representation is made by the NTA as to the accuracy, completeness, sufficiency or otherwise of this drawing and the position of the apparatus. The information contained herein does not purport to be comprehensive or final as the apparatus is subject to being altered and/or superseded. Recipients should not rely on this information. Any liabilities are hereby expressly disclaimed.

e. The information contained herein has been provided by the NTA but does not purport to be comprehensive or final. Recipients should not rely on the information. Neither the NTA nor any of its directors, officers, employees, agents, stakeholders or advisers make any representation or warranty as to, or accept any liability or responsibility in relation to, the adequacy, accuracy, reasonableness or completeness of the information provided as part of this document or any matter on which the information is based (including but not limited to loss or damage arising as a result of reliance by recipients on the information or any part of it). Any liabilities are hereby expressly disclaimed.



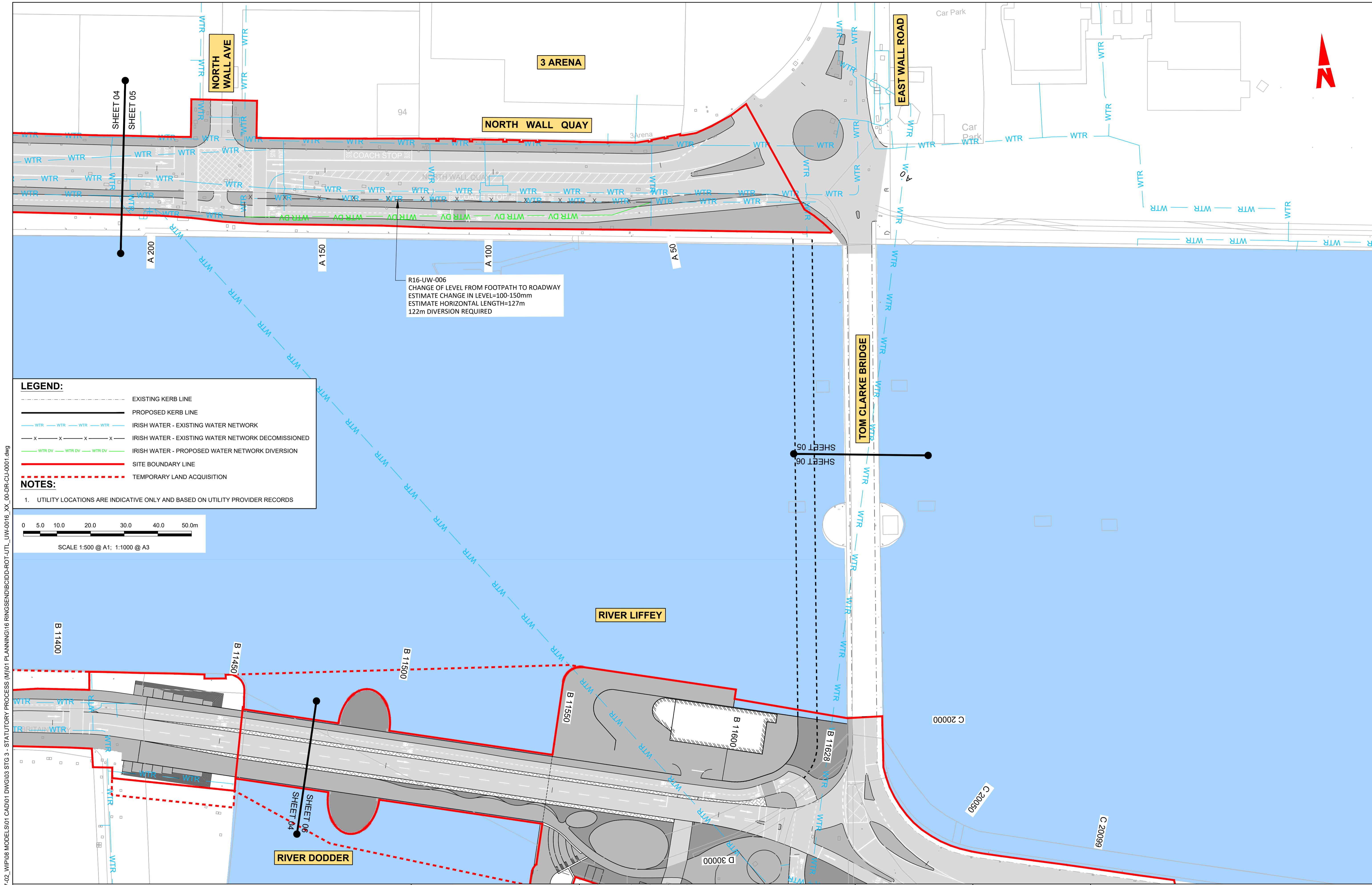
Rev	Date	Drn	Chk'd	App'd	Description
M01	MAR 2023	DS	EOC	SMG	ISSUE FOR PHASE 4: PLANNING

NTA Údarás Náisiúnta Iompair National Transport Authority		CIROD TYPSA		
Date	Scale	Drawn	Checked	Approved
MAR 2023	1:500 @ A1 1:1000 @ A3	DS	EOC	SMG
Programme Code	Originator Code	QMS Code		
BCIDD	ROT			

BUSCONNECTS DUBLIN CORE BUS CORRIDORS INFRASTRUCTURE WORKS			
Drawing Title RINGSEND TO CITY CENTRE CORE BUS CORRIDOR SCHEME IW WATER ASSET ALTERATIONS			
Drawing File Name	Sheet Number	Status	Rev
BCIDD-ROT-UTL_UW-0016_XX_00-DR-CU-0004	04 of 12	A	M01

DO NOT SCALE USE FIGURED DIMENSIONS ONLY

\\nodubp1u20191917117-02_WIP08 MODELS01 CAD01 DWG003 STG 3 - STATUTORY PROCESS (M)01 PLANNING16 RINGSEND/BCIDD-ROT-UTL_UW-0016_XX_00-DR-CU-0001.dwg

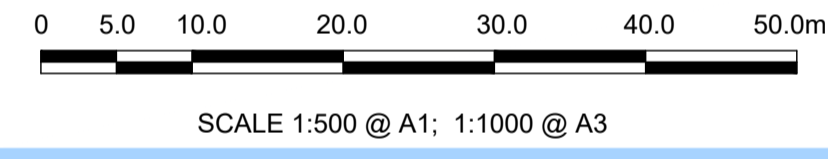


LEGEND:

- EXISTING KERB LINE
- PROPOSED KERB LINE
- WTR IRISH WATER - EXISTING WATER NETWORK
- X X X X IRISH WATER - EXISTING WATER NETWORK DECOMMISSIONED
- WTR DV IRISH WATER - PROPOSED WATER NETWORK DIVERSION
- SITE BOUNDARY LINE
- - - - - TEMPORARY LAND ACQUISITION

NOTES:

- UTILITY LOCATIONS ARE INDICATIVE ONLY AND BASED ON UTILITY PROVIDER RECORDS



\\v00dubp1u20191917117-02_WIP008 MODELS01 CAD01 DWG003 STG 3 - STATUTORY PROCESS (M)01 PLANNING16 RINGSEND/BCIDD-ROT-UTL_UW-0016_XX_00-DR-CU-0001.dwg

Disclaimer
 a. © National Transport Authority (NTA) 2022. This drawing is confidential and the copyright in it is owned by NTA. This drawing must not be either loaned, copied or otherwise reproduced in whole or in part or used for any purpose without the prior permission of NTA.
 b. This drawing is to be used for the design element identified in the titleblock. Other information shown is to be considered indicative only. The drawing is to be read in conjunction with all other relevant design drawings.
 c. O.S. data used for plans are printed under © Ordnance Survey Ireland Government of Ireland. All rights reserved. Licence Number 2022/OSI_NMA_180 National Transport Authority. All elevations are in metres and relate to OSI Geoid Model (OSGM15) Mean Head. All Co-ordinates are in Irish

Transverse Mercator Grid (ITM) as defined by OSI active local GPS station.
 d. Information concerning the position of apparatus shown on this drawing is based on drawings supplied by the utility owners and/or the utility works contractor, whilst every care has been taken in the preparation of this drawing, positions should be taken as approximate and are intended for general guidance only and no representation is made by the NTA as to the accuracy, completeness, sufficiency or otherwise of this drawing and the position of the apparatus. The information contained herein does not purport to be comprehensive or final as the apparatus is subject to being altered and/or superceded. Recipients should not rely on this information. Any liabilities are hereby expressly disclaimed.

e. The information contained herein has been provided by the NTA but does not purport to be comprehensive or final. Recipients should not rely on the information. Neither the NTA nor any of its directors, officers, employees, agents, stakeholders or advisers make any representation or warranty as to, or accept any liability or responsibility in relation to, the adequacy, accuracy, reasonableness or completeness of the information provided as part of this document or any matter on which the information is based (including but not limited to loss or damage arising as a result of reliance by recipients on the information or any part of it). Any liabilities are hereby expressly disclaimed.



Rev	Date	Drm	Chk'd	App'd	Description
M01	MAR 2023	DS	EOC	SMG	ISSUE FOR PHASE 4: PLANNING

Client
NTA
 Údarás Náisiúnta Iompair
 National Transport Authority

Engineering Designer
FIROD
 TYPSA

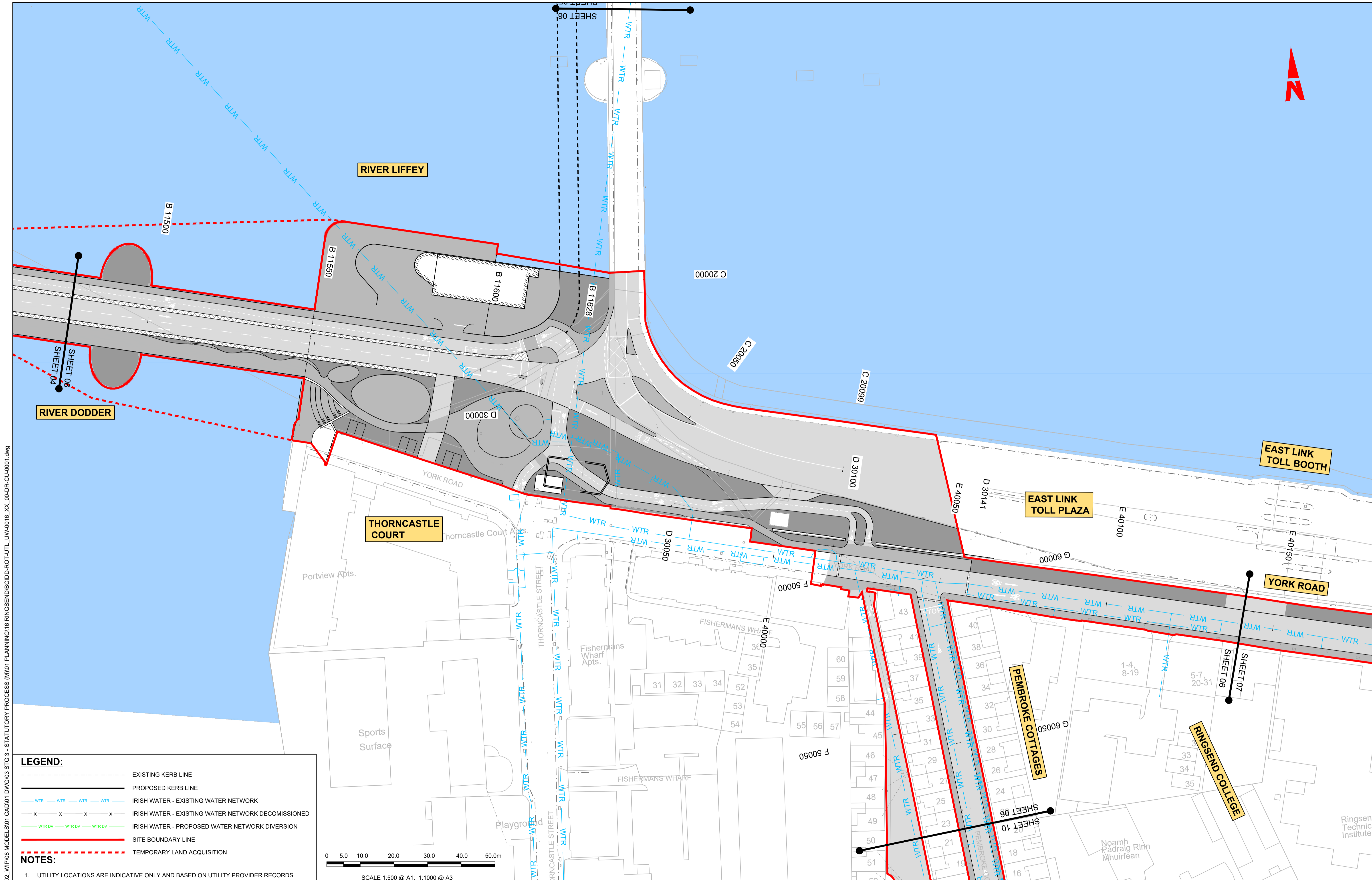
Date	Scale	Drawn	Checked	Approved
MAR 2023	1:500 @ A1 1:1000 @ A3	DS	EOC	SMG

Programme Title
**BUSCONNECTS DUBLIN
 CORE BUS CORRIDORS INFRASTRUCTURE WORKS**

Drawing Title
 RINGSEND TO CITY CENTRE CORE BUS CORRIDOR SCHEME
 IW WATER ASSET ALTERATIONS

Drawing File Name	Sheet Number	Status	Rev
BCIDD-ROT-UTL_UW-0016_XX_00-DR-CU-0005	05 of 12	A	M01

DO NOT SCALE USE FIGURED DIMENSIONS ONLY

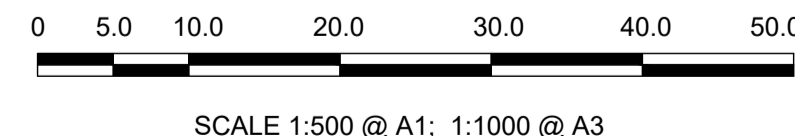


LEGEND:

- EXISTING KERB LINE
- PROPOSED KERB LINE
- IRISH WATER - EXISTING WATER NETWORK
- IRISH WATER - EXISTING WATER NETWORK DECOMMISSIONED
- IRISH WATER - PROPOSED WATER NETWORK DIVERSION
- SITE BOUNDARY LINE
- TEMPORARY LAND ACQUISITION

NOTES:

- UTILITY LOCATIONS ARE INDICATIVE ONLY AND BASED ON UTILITY PROVIDER RECORDS



\\wddubp1u20191917171717-02_WPI08 MODELS\01 CAD\01 PLANNING\16 RINGSEND\BCIDD-ROT-UTL_UW-0016_XX_00-DR-CU-0001.dwg

<p><small>Disclaimer</small></p> <p>a. © National Transport Authority (NTA) 2022. This drawing is confidential and the copyright in it is owned by NTA. This drawing must not be either loaned, copied or otherwise reproduced in whole or in part or used for any purpose without the prior permission of NTA.</p> <p>b. This drawing is to be used for the design element identified in the titleblock. Other information shown is to be considered indicative only. The drawing is to be read in conjunction with all other relevant design drawings.</p> <p>c. O.S. data used for plans are printed under © Ordnance Survey Ireland Government of Ireland. All rights reserved. Licence Number 2022/OSI_NMA_180 National Transport Authority. All elevations are in metres and relate to OSI Geoid Model (OSGM15) Mean Head. All Co-ordinates are in Irish Transverse Mercator Grid (ITM) as defined by OSI active local GPS station.</p> <p>d. Information concerning the position of apparatus shown on this drawing is based on drawings supplied by the utility owners and/or the utility works contractor, whilst every care has been taken in the preparation of this drawing, positions should be taken as approximate and are intended for general guidance only and no representation is made by the NTA as to the accuracy, completeness, sufficiency or otherwise of this drawing and the position of the apparatus. The information contained herein does not purport to be comprehensive or final as the apparatus is subject to being altered and/or superseded. Recipients should not rely on this information. Any liabilities are hereby expressly disclaimed.</p>		<p>Rev M01 Date MAR 2023 Dm DS Chk'd EOC App'd SMG Description ISSUE FOR PHASE 4: PLANNING</p>		<p>Client NTA Údarás Náisiúnta Iompair National Transport Authority</p>		<p>Engineering Designer CIROD TYPSA</p>			<p>Programme Title BUSCONNECTS DUBLIN CORE BUS CORRIDORS INFRASTRUCTURE WORKS</p>			
<p>Date MAR 2023 Scale 1:500 @ A1 1:1000 @ A3</p>		<p>Drawn DS Checked EOC Approved SMG</p>		<p>Programme Code BCIDD Originator Code ROT QMS Code</p>		<p>Drawing Title RINGSEND TO CITY CENTRE CORE BUS CORRIDOR SCHEME IW WATER ASSET ALTERATIONS</p>						
<p>Drawing File Name BCIDD-ROT-UTL_UW-0016_XX_00-DR-CU-0006</p>						<p>Sheet Number 06 of 12</p>		<p>Status A</p>		<p>Rev M01</p>		

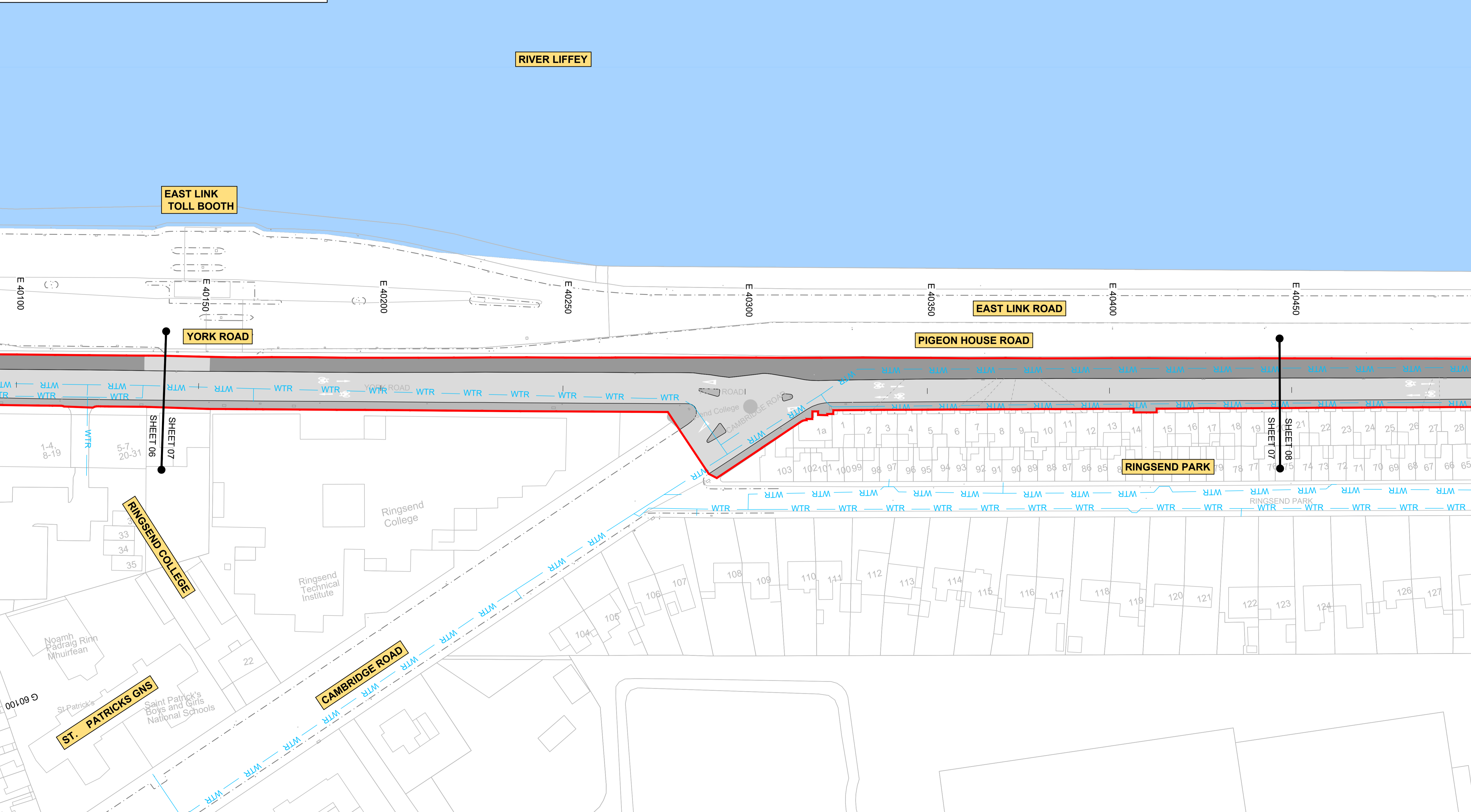
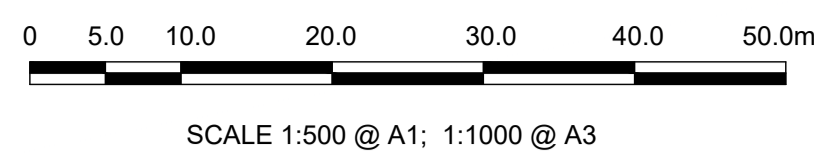
DO NOT SCALE USE FIGURED DIMENSIONS ONLY

LEGEND:

- EXISTING KERB LINE
- PROPOSED KERB LINE
- WTR — WTR — WTR — WTR — IRISH WATER - EXISTING WATER NETWORK
- x — x — x — x — IRISH WATER - EXISTING WATER NETWORK DECOMMISSIONED
- WTR DV — WTR DV — WTR DV — IRISH WATER - PROPOSED WATER NETWORK DIVERSION
- SITE BOUNDARY LINE
- - - - - TEMPORARY LAND ACQUISITION

NOTES:

- UTILITY LOCATIONS ARE INDICATIVE ONLY AND BASED ON UTILITY PROVIDER RECORDS



Disclaimer

a. © National Transport Authority (NTA) 2022. This drawing is confidential and the copyright in it is owned by NTA. This drawing must not be either loaned, copied or otherwise reproduced in whole or in part or used for any purpose without the prior permission of NTA.

b. This drawing is to be used for the design element identified in the titleblock. Other information shown is to be considered indicative only. The drawing is to be read in conjunction with all other relevant design drawings.

c. O.S. data used for plans are printed under © Ordnance Survey Ireland Government of Ireland. All rights reserved. Licence Number 2022/OSI_NMA_180 National Transport Authority. All elevations are in metres and relate to OSI Geoid Model (OSGM15) Mean Head. All Co-ordinates are in Irish Transverse Mercator Grid (ITM) as defined by OSI active local GPS station.

d. Information concerning the position of apparatus shown on this drawing is based on drawings supplied by the utility owners and/or the utility works contractor, whilst every care has been taken in the preparation of this drawing, positions should be taken as approximate and are intended for general guidance only and no representation is made by the NTA as to the accuracy, completeness, sufficiency or otherwise of this drawing and the position of the apparatus. The information contained herein does not purport to be comprehensive or final as the apparatus is subject to being altered and/or superceded. Recipients should not rely on this information. Any liabilities are hereby expressly disclaimed.

e. The information contained herein has been provided by the NTA but does not purport to be comprehensive or final. Recipients should not rely on the information. Neither the NTA nor any of its directors, officers, employees, agents, stakeholders or advisers make any representation or warranty as to, or accept any liability or responsibility in relation to, the adequacy, accuracy, reasonableness or completeness of the information provided as part of this document or any matter on which the information is based (including but not limited to loss or damage arising as a result of reliance by recipients on the information or any part of it). Any liabilities are hereby expressly disclaimed.



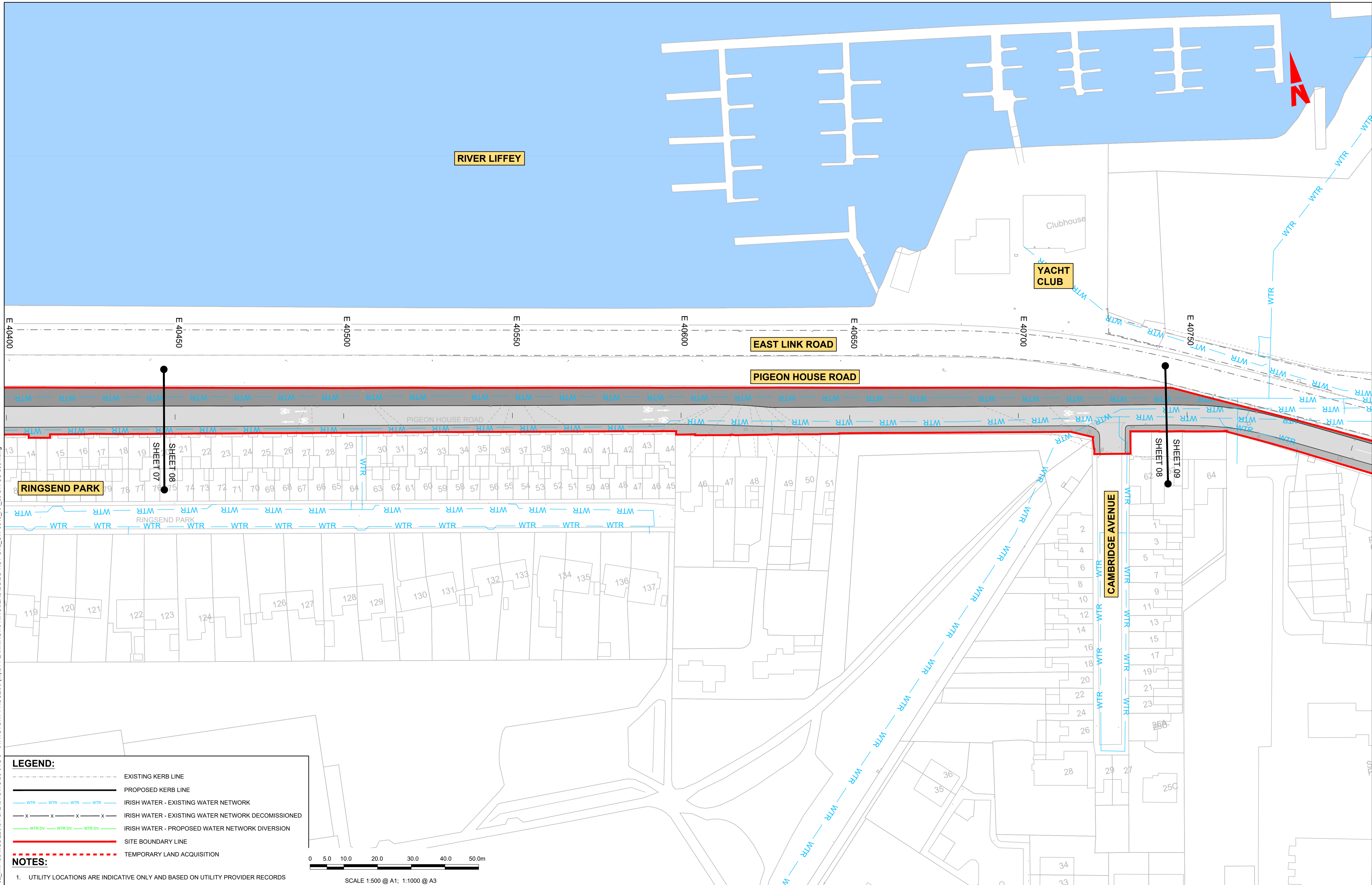
Rev	Date	Drm	Chk'd	App'd	Description
M01	MAR 2023	DS	EOC	SMG	ISSUE FOR PHASE 4: PLANNING

Date	Scale	Drawn	Checked	Approved
MAR 2023	1:500 @ A1 1:1000 @ A3	DS	EOC	SMG
Programme Code	Originator Code	QMS Code		
BCIDD	ROT			

Programme Title BUSCONNECTS DUBLIN CORE BUS CORRIDORS INFRASTRUCTURE WORKS			
Drawing Title RINGSEND TO CITY CENTRE CORE BUS CORRIDOR SCHEME IW WATER ASSET ALTERATIONS			
Drawing File Name	Sheet Number	Status	Rev
BCIDD-ROT-UTL_UW-0016_XX_00-DR-CU-0007	07 of 12	A	M01

DO NOT SCALE USE FIGURED DIMENSIONS ONLY

\\nodubp1\U201919\17117-02_WIP\08 MODELS\01 CAD\01 DWG\03 STG 3 - STATUTORY PROCESS (M)\01 PLANNING\16 RINGSEND\BCIDD-ROT-UTL_UW-0016_XX_00-DR-CU-0001.dwg

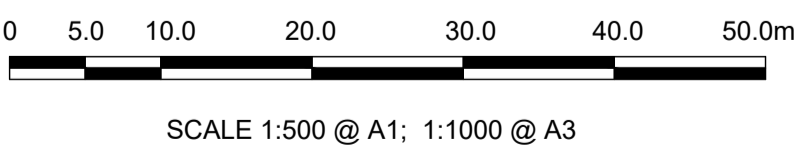


LEGEND:

- EXISTING KERB LINE
- - - PROPOSED KERB LINE
- WTR IRISH WATER - EXISTING WATER NETWORK
- x-x-x-x IRISH WATER - EXISTING WATER NETWORK DECOMMISSIONED
- WTR DV IRISH WATER - PROPOSED WATER NETWORK DIVERSION
- SITE BOUNDARY LINE
- - - - - TEMPORARY LAND ACQUISITION

NOTES:

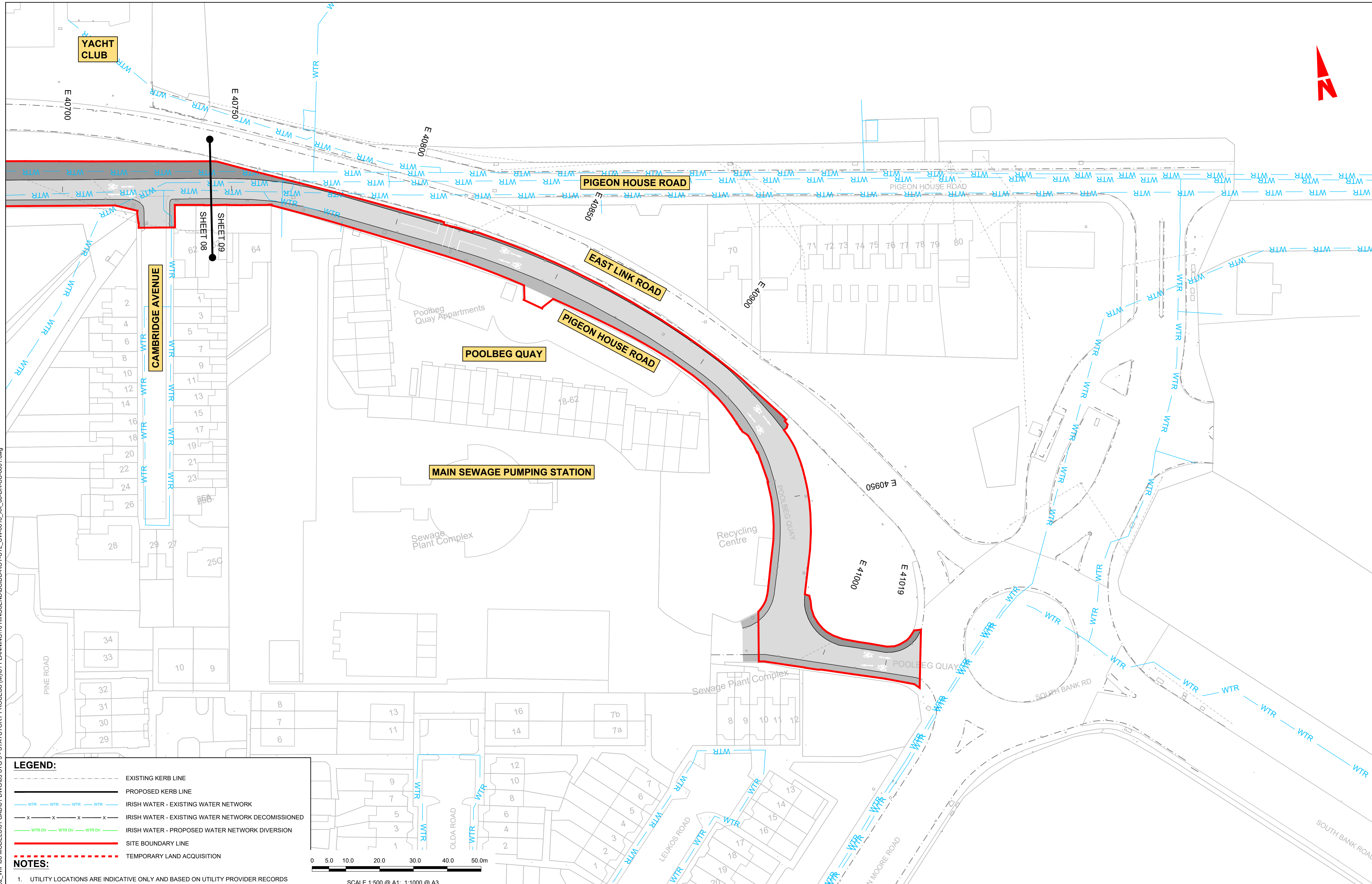
- UTILITY LOCATIONS ARE INDICATIVE ONLY AND BASED ON UTILITY PROVIDER RECORDS



<p>Disclaimer</p> <p>a. © National Transport Authority (NTA) 2022. This drawing is confidential and the copyright in it is owned by NTA. This drawing must not be either loaned, copied or otherwise reproduced in whole or in part or used for any purpose without the prior permission of NTA.</p> <p>b. This drawing is to be used for the design element identified in the titlebox. Other information shown is to be considered indicative only. The drawing is to be read in conjunction with all other relevant design drawings.</p> <p>c. O.S. data used for plans are printed under © Ordnance Survey Ireland Government of Ireland. All rights reserved. Licence Number 2022/OSI_NMA_180 National Transport Authority. All elevations are in metres and relate to OSI Geoid Model (OSGM15) Mean Head. All Co-ordinates are in Irish Transverse Mercator Grid (ITM) as defined by OSI active local GPS station.</p> <p>d. Information concerning the position of apparatus shown on this drawing is based on drawings supplied by the utility owners and/or the utility works contractor, whilst every care has been taken in the preparation of this drawing, positions should be taken as approximate and are intended for general guidance only and no representation is made by the NTA as to the accuracy, completeness, sufficiency or otherwise of this drawing and the position of the apparatus. The information contained herein does not purport to be comprehensive or final as the apparatus is subject to being altered and/or superseded. Recipients should not rely on this information. Any liabilities are hereby expressly disclaimed.</p> <p>e. The information contained herein has been provided by the NTA but does not purport to be comprehensive or final. Recipients should not rely on the information. Neither the NTA nor any of its directors, officers, employees, agents, stakeholders or advisers make any representation or warranty as to, or accept any liability or responsibility in relation to, the adequacy, accuracy, reasonableness or completeness of the information provided as part of this document or any matter on which the information is based (including but not limited to loss or damage arising as a result of reliance by recipients on the information or any part of it). Any liabilities are hereby expressly disclaimed.</p>		<table border="1"> <thead> <tr> <th>Rev</th> <th>Date</th> <th>Drm</th> <th>Chk'd</th> <th>App'd</th> <th>Description</th> </tr> </thead> <tbody> <tr> <td>M01</td> <td>MAR 2023</td> <td>DS</td> <td>EOC</td> <td>SMG</td> <td>ISSUE FOR PHASE 4: PLANNING</td> </tr> </tbody> </table>	Rev	Date	Drm	Chk'd	App'd	Description	M01	MAR 2023	DS	EOC	SMG	ISSUE FOR PHASE 4: PLANNING	<p>Client</p> <p>Údarás Náisiúnta Iompair National Transport Authority</p>	<p>Engineering Designer</p> <p>TYPSA</p>	<p>Programme Title</p> <p>BUSCONNECTS DUBLIN CORE BUS CORRIDORS INFRASTRUCTURE WORKS</p>
		Rev	Date	Drm	Chk'd	App'd	Description										
M01	MAR 2023	DS	EOC	SMG	ISSUE FOR PHASE 4: PLANNING												
<p>Date</p> <p>MAR 2023</p> <p>Programme Code</p> <p>BCIDD</p>	<p>Scale</p> <p>1:500 @ A1 1:1000 @ A3</p> <p>Originator Code</p> <p>ROT</p>	<p>Drawn</p> <p>DS</p> <p>Checked</p> <p>EOC</p> <p>Approved</p> <p>SMG</p>	<p>QMS Code</p>	<p>Drawing Title</p> <p>RINGSEND TO CITY CENTRE CORE BUS CORRIDOR SCHEME IW WATER ASSET ALTERATIONS</p>	<p>Drawing File Name</p> <p>BCIDD-ROT-UTL_UW-0016_XX_00-DR-CU-0008</p>	<p>Sheet Number</p> <p>08 of 12</p>	<p>Status</p> <p>A</p>	<p>Rev</p> <p>M01</p>									

DO NOT SCALE USE FIGURED DIMENSIONS ONLY

\\nodub\p1\j2019\1917119117-02_WIP\08 MODELS\01 CAD\01 PLANNING\16 RINGSEND\BCIDD-ROT-UTL_UW-0016_XX_00-DR-CU-0001.dwg

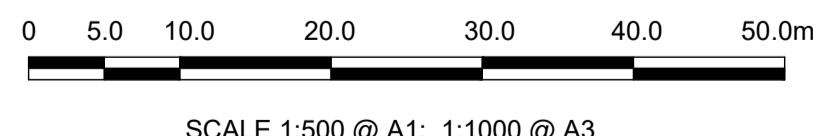


LEGEND:

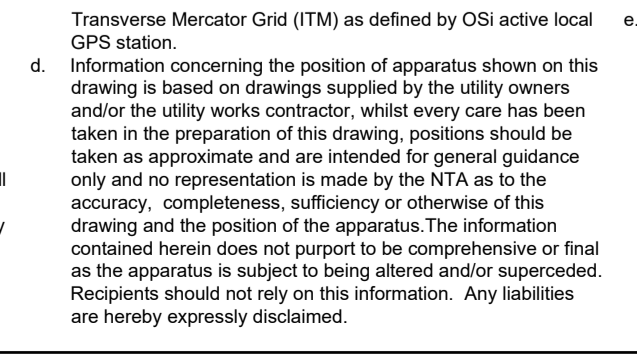
- EXISTING KERB LINE
- PROPOSED KERB LINE
- IRISH WATER - EXISTING WATER NETWORK
- IRISH WATER - EXISTING WATER NETWORK DECOMMISSIONED
- IRISH WATER - PROPOSED WATER NETWORK DIVERSION
- SITE BOUNDARY LINE
- TEMPORARY LAND ACQUISITION

NOTES:

- UTILITY LOCATIONS ARE INDICATIVE ONLY AND BASED ON UTILITY PROVIDER RECORDS



Disclaimer
 a. © National Transport Authority (NTA) 2022. This drawing is confidential and the copyright in it is owned by NTA. This drawing must not be either loaned, copied or otherwise reproduced in whole or in part or used for any purpose without the prior permission of NTA.
 b. This drawing is to be used for the design element identified in the titleblock. Other information shown is to be considered indicative only. The drawing is to be read in conjunction with all other relevant design drawings.
 c. O.S. data used for plans are printed under © Ordnance Survey Ireland Government of Ireland. All rights reserved. Licence Number 2022/OSI_NMA_180 National Transport Authority. All elevations are in metres and relate to OSI Geoid Model (OSGM15) Mean Head. All Co-ordinates are in Irish Transverse Mercator Grid (ITM) as defined by OSI active local GPS station.
 d. Information concerning the position of apparatus shown on this drawing is based on drawings supplied by the utility owners and/or the utility works contractor, whilst every care has been taken in the preparation of this drawing, positions should be taken as approximate and are intended for general guidance only and no representation is made by the NTA as to the accuracy, completeness, sufficiency or otherwise of this drawing and the position of the apparatus. The information contained herein does not purport to be comprehensive or final as the apparatus is subject to being altered and/or superceded. Recipients should not rely on this information. Any liabilities are hereby expressly disclaimed.
 e. The information contained herein has been provided by the NTA but does not purport to be comprehensive or final. Recipients should not rely on the information. Neither the NTA nor any of its directors, officers, employees, agents, stakeholders or advisers make any representation or warranty as to, or accept any liability or responsibility in relation to, the adequacy, accuracy, reasonableness or completeness of the information provided as part of this document or any matter on which the information is based (including but not limited to loss or damage arising as a result of reliance by recipients on the information or any part of it). Any liabilities are hereby expressly disclaimed.



Rev	Date	Drn	Chk'd	App'd	Description
M01	MAR 2023	DS	EOC	SMG	ISSUE FOR PHASE 4: PLANNING

Client: **NTA**
 Údarás Náisiúnta Iompair
 National Transport Authority

Engineering Designer: **CIROD**
 TYPSA

Date: MAR 2023
 Scale: 1:500 @ A1
 1:1000 @ A3

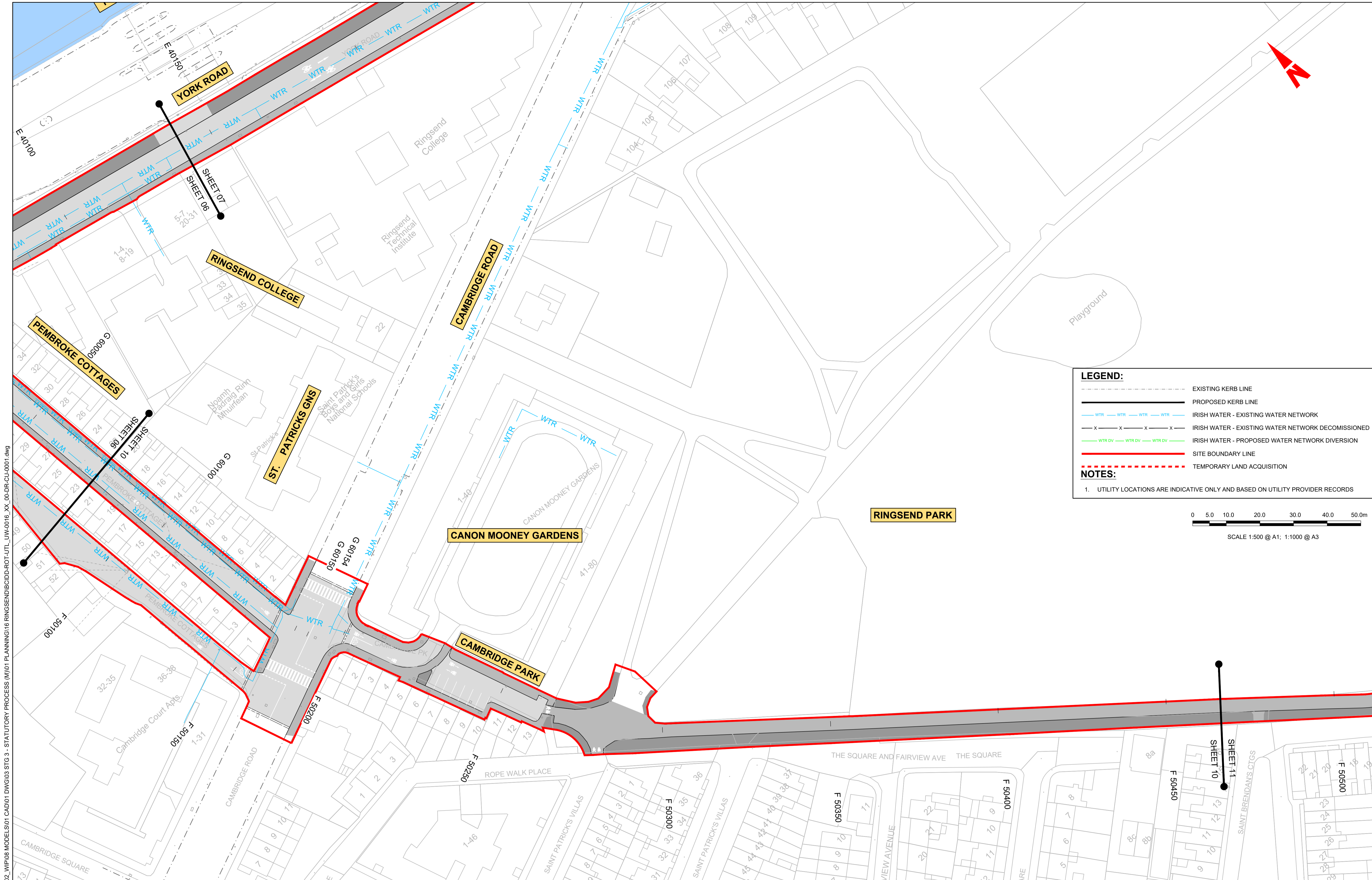
Drawn: DS
 Checked: EOC
 Approved: SMG

Programme Code: BCIDD
 Originator Code: ROT
 QMS Code:

Programme Title		Drawing Title	
BUSCONNECTS DUBLIN		RINGSEND TO CITY CENTRE CORE BUS CORRIDOR SCHEME	
CORE BUS CORRIDORS INFRASTRUCTURE WORKS		IW WATER ASSET ALTERATIONS	
Drawing File Name	Sheet Number	Status	Rev
BCIDD-ROT-UTL_UW-0016_XX_00-DR-CU-0009	09 of 12	A	M01

DO NOT SCALE USE FIGURED DIMENSIONS ONLY

\\nodubhp1\U201919\17117-02_WIP\08 MODELS\01 CAD\01 PLANNING\16 RINGSEND\BCIDD-ROT-UTL_UW-0016_XX_00-DR-CU-0001.dwg

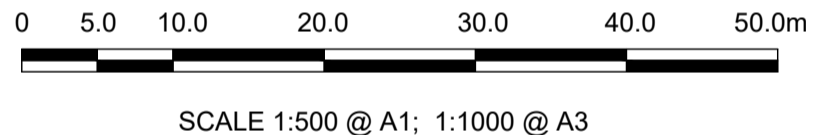


LEGEND:

- EXISTING KERB LINE
- PROPOSED KERB LINE
- IRISH WATER - EXISTING WATER NETWORK
- IRISH WATER - EXISTING WATER NETWORK DECOMMISSIONED
- IRISH WATER - PROPOSED WATER NETWORK DIVERSION
- SITE BOUNDARY LINE
- TEMPORARY LAND ACQUISITION

NOTES:

- UTILITY LOCATIONS ARE INDICATIVE ONLY AND BASED ON UTILITY PROVIDER RECORDS



\\nodubp1u20191917117-02_WIP08 MODELS01 CAD01 DWG03 STG 3 - STATUTORY PROCESS (M)01 PLANNING16 RINGSEND\BCIDD-ROT-UTL_UW-0016_XX_00-DR-CU-0001.dwg

Disclaimer

a. © National Transport Authority (NTA) 2022. This drawing is confidential and the copyright in it is owned by NTA. This drawing must not be either loaned, copied or otherwise reproduced in whole or in part or used for any purpose without the prior permission of NTA.

b. This drawing is to be used for the design element identified in the title block. Other information shown is to be considered indicative only. The drawing is to be read in conjunction with all other relevant design drawings.

c. O.S. data used for plans are printed under © Ordnance Survey Ireland Government of Ireland. All rights reserved. Licence Number 2022/OSI_NMA_180 National Transport Authority. All elevations are in metres and relate to OSI Geoid Model (OSGM15) Mean Head. All Co-ordinates are in Irish Transverse Mercator Grid (ITM) as defined by OSI active local GPS station.

d. Information concerning the position of apparatus shown on this drawing is based on drawings supplied by the utility owners and/or the utility works contractor, whilst every care has been taken in the preparation of this drawing, positions should be taken as approximate and are intended for general guidance only and no representation is made by the NTA as to the accuracy, completeness, sufficiency or otherwise of this drawing and the position of the apparatus. The information contained herein does not purport to be comprehensive or final as the apparatus is subject to being altered and/or superceded. Recipients should not rely on this information. Any liabilities are hereby expressly disclaimed.

e. The information contained herein has been provided by the NTA but does not purport to be comprehensive or final. Recipients should not rely on the information. Neither the NTA nor any of its directors, officers, employees, agents, stakeholders or advisers make any representation or warranty as to, or accept any liability or responsibility in relation to, the adequacy, accuracy, reasonableness or completeness of the information provided as part of this document or any matter on which the information is based (including but not limited to loss or damage arising as a result of reliance by recipients on the information or any part of it). Any liabilities are hereby expressly disclaimed.



Rev	Date	Drn	Chk'd	App'd	Description
M01	MAR 2023	DS	EOC	SMG	ISSUE FOR PHASE 4: PLANNING

Client

Date: MAR 2023
Scale: 1:500 @ A1, 1:1000 @ A3

Engineering Designer

Drawn: DS
Checked: EOC
Approved: SMG

Programme Title: **BUSCONNECTS DUBLIN CORE BUS CORRIDORS INFRASTRUCTURE WORKS**

Drawing Title: RINGSEND TO CITY CENTRE CORE BUS CORRIDOR SCHEME IW WATER ASSET ALTERATIONS

Drawing File Name: BCIDD-ROT-UTL_UW-0016_XX_00-DR-CU-0010

Sheet Number: 10 of 12

Status: A

Rev: M01

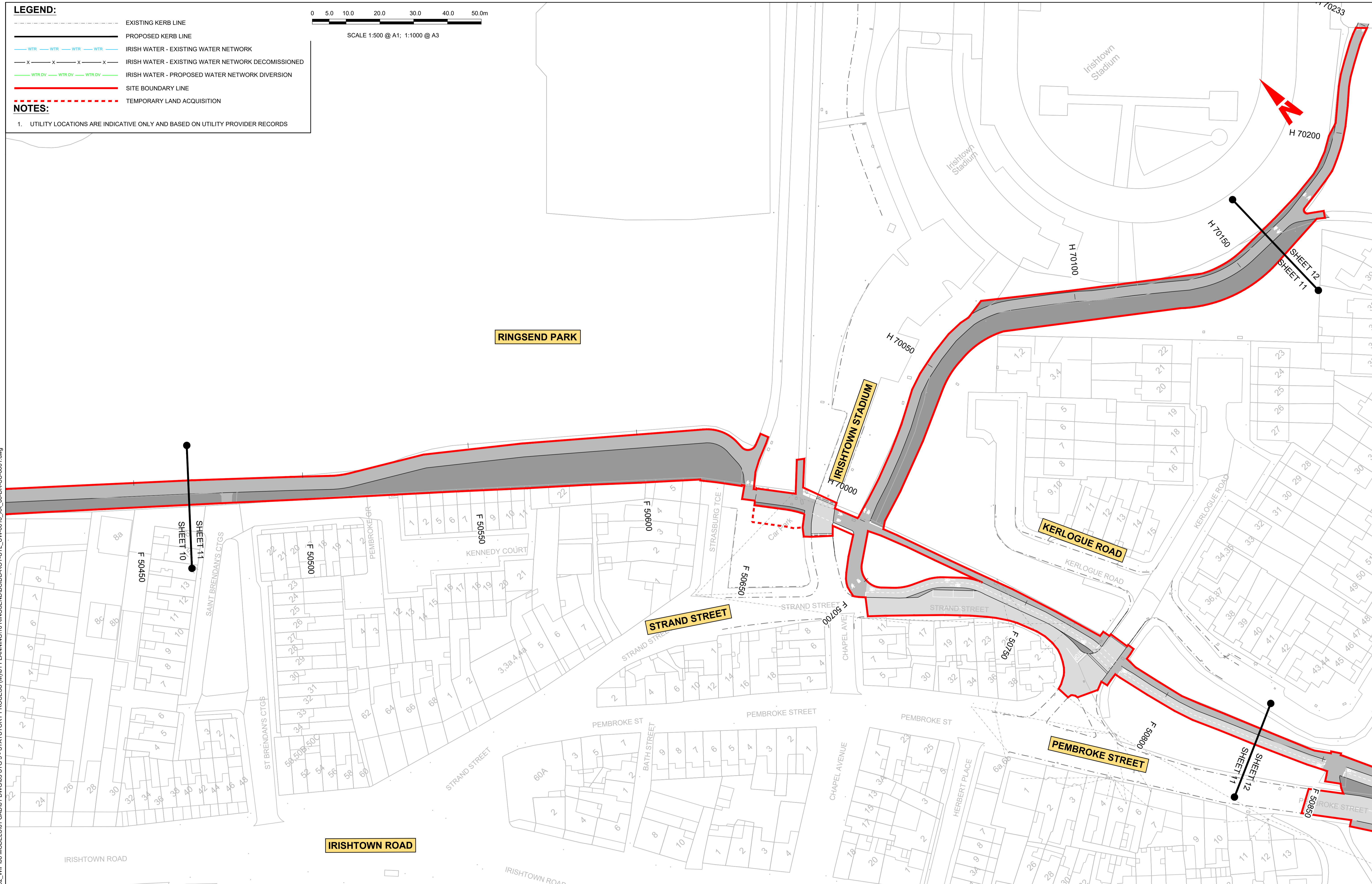
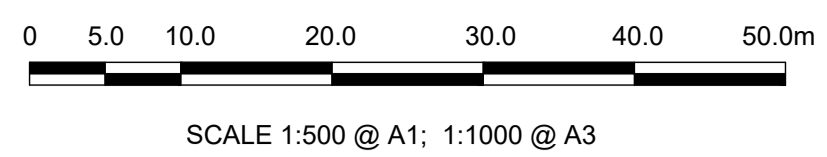
DO NOT SCALE USE FIGURED DIMENSIONS ONLY

LEGEND:

- EXISTING KERB LINE
- PROPOSED KERB LINE
- WTR — WTR — WTR — WTR — IRISH WATER - EXISTING WATER NETWORK
- x — x — x — x — IRISH WATER - EXISTING WATER NETWORK DECOMMISSIONED
- WTR DV — WTR DV — WTR DV — IRISH WATER - PROPOSED WATER NETWORK DIVERSION
- SITE BOUNDARY LINE
- - - - - TEMPORARY LAND ACQUISITION

NOTES:

- UTILITY LOCATIONS ARE INDICATIVE ONLY AND BASED ON UTILITY PROVIDER RECORDS



Disclaimer

a. © National Transport Authority (NTA) 2022. This drawing is confidential and the copyright in it is owned by NTA. This drawing must not be either loaned, copied or otherwise reproduced in whole or in part or used for any purpose without the prior permission of NTA.

b. This drawing is to be used for the design element identified in the titleblock. Other information shown is to be considered indicative only. The drawing is to be read in conjunction with all other relevant design drawings.

c. O.S. data used for plans are printed under © Ordnance Survey Ireland Government of Ireland. All rights reserved. Licence Number 2022/OSI_NMA_180 National Transport Authority. All elevations are in metres and relate to OSI Geoid Model (OSGM15) Mean Head. All Co-ordinates are in Irish Transverse Mercator Grid (ITM) as defined by OSI active local GPS station.

d. Information concerning the position of apparatus shown on this drawing is based on drawings supplied by the utility owners and/or the utility works contractor, whilst every care has been taken in the preparation of this drawing, positions should be taken as approximate and are intended for general guidance only and no representation is made by the NTA as to the accuracy, completeness, sufficiency or otherwise of this drawing and the position of the apparatus. The information contained herein does not purport to be comprehensive or final as the apparatus is subject to being altered and/or superceded. Recipients should not rely on this information. Any liabilities are hereby expressly disclaimed.

e. The information contained herein has been provided by the NTA but does not purport to be comprehensive or final. Recipients should not rely on the information. Neither the NTA nor any of its directors, officers, employees, agents, stakeholders or advisers make any representation or warranty as to, or accept any liability or responsibility in relation to, the adequacy, accuracy, reasonableness or completeness of the information provided as part of this document or any matter on which the information is based (including but not limited to loss or damage arising as a result of reliance by recipients on the information or any part of it). Any liabilities are hereby expressly disclaimed.

Building Ireland's Future

Rev	Date	Drn	Chk'd	App'd	Description
M01	MAR 2023	DS	EOC	SMG	ISSUE FOR PHASE 4: PLANNING

Client: **NTA**
Údarás Náisiúnta Iompair
National Transport Authority

Engineering Designer: **CIROD**
TYPSA

Date: MAR 2023
Scale: 1:500 @ A1
1:1000 @ A3

Programme Code: BCIDD
Originator Code: ROT

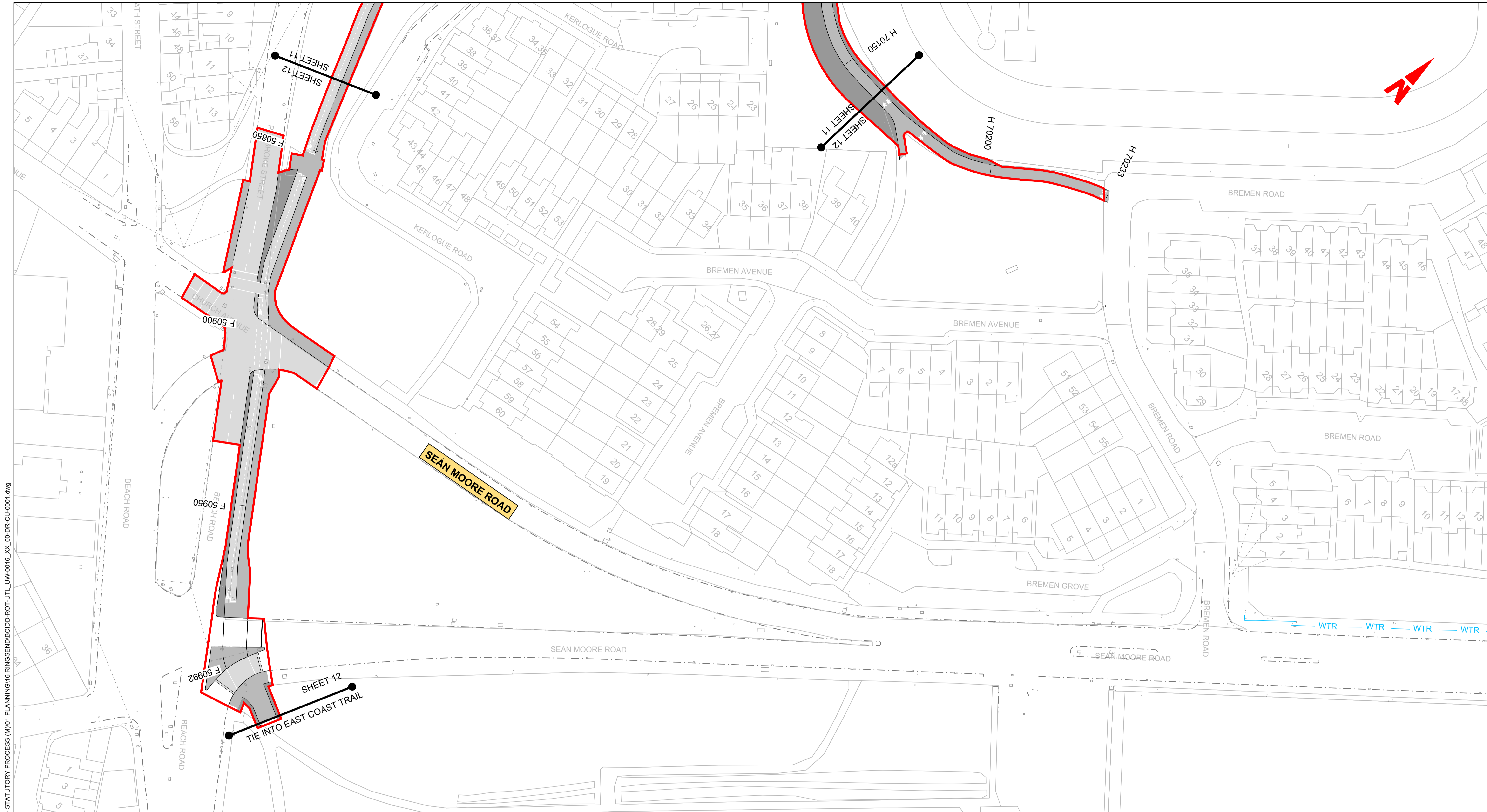
Drawn: DS
Checked: EOC
Approved: SMG

QMS Code

Programme Title: BUSCONNECTS DUBLIN CORE BUS CORRIDORS INFRASTRUCTURE WORKS			
Drawing Title: RINGSEND TO CITY CENTRE CORE BUS CORRIDOR SCHEME IW WATER ASSET ALTERATIONS			
Drawing File Name: BCIDD-ROT-UTL_UW-0016_XX_00-DR-CU-0011	Sheet Number: 11 of 12	Status: A	Rev: M01

DO NOT SCALE USE FIGURED DIMENSIONS ONLY

\\vodubp1u2019191717117-02_WIP08 MODELS01 CAD01 DWG003 STG 3 - STATUTORY PROCESS (M)01 PLANNING16 RINGSEND\BCIDD-ROT-UTL_UW-0016_XX_00-DR-CU-0001.dwg

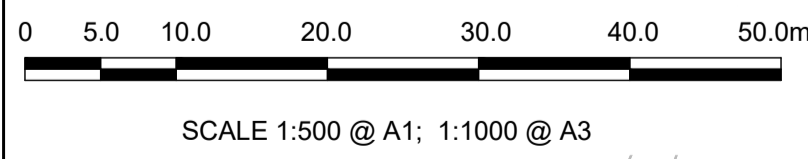


LEGEND:

- EXISTING KERB LINE
- PROPOSED KERB LINE
- IRISH WATER - EXISTING WATER NETWORK
- IRISH WATER - EXISTING WATER NETWORK DECOMMISSIONED
- IRISH WATER - PROPOSED WATER NETWORK DIVERSION
- SITE BOUNDARY LINE
- TEMPORARY LAND ACQUISITION

NOTES:

- UTILITY LOCATIONS ARE INDICATIVE ONLY AND BASED ON UTILITY PROVIDER RECORDS



Disclaimer

a. © National Transport Authority (NTA) 2022. This drawing is confidential and the copyright in it is owned by NTA. This drawing must not be either loaned, copied or otherwise reproduced in whole or in part or used for any purpose without the prior permission of NTA.

b. This drawing is to be used for the design element identified in the titleblock. Other information shown is to be considered indicative only. The drawing is to be read in conjunction with all other relevant design drawings.

c. O.S. data used for plans are printed under © Ordnance Survey Ireland Government of Ireland. All rights reserved. Licence Number 2022/OSI_NMA_180 National Transport Authority. All elevations are in metres and relate to OSI Geoid Model (OSGM15) Mean Head. All Co-ordinates are in Irish Transverse Mercator Grid (ITM) as defined by OSI active local GPS station.

d. Information concerning the position of apparatus shown on this drawing is based on drawings supplied by the utility owners and/or the utility works contractor, whilst every care has been taken in the preparation of this drawing, positions should be taken as approximate and are intended for general guidance only and no representation is made by the NTA as to the accuracy, completeness, sufficiency or otherwise of this drawing and the position of the apparatus. The information contained herein does not purport to be comprehensive or final as the apparatus is subject to being altered and/or superceded. Recipients should not rely on this information. Any liabilities are hereby expressly disclaimed.

e. The information contained herein has been provided by the NTA but does not purport to be comprehensive or final. Recipients should not rely on the information. Neither the NTA nor any of its directors, officers, employees, agents, stakeholders or advisers make any representation or warranty as to, or accept any liability or responsibility in relation to, the adequacy, accuracy, reasonableness or completeness of the information provided as part of this document or any matter on which the information is based (including but not limited to loss or damage arising as a result of reliance by recipients on the information or any part of it). Any liabilities are hereby expressly disclaimed.



Rev	Date	Drn	Chk'd	App'd	Description
M01	MAR 2023	DS	EOC	SMG	ISSUE FOR PHASE 4: PLANNING

Client: **NTA**
Údarás Náisiúnta Iompair
National Transport Authority

Engineering Designer: **CIROD**
TYPSA

Date: MAR 2023
Scale: 1:500 @ A1
1:1000 @ A3

Drawn: DS
Checked: EOC
Approved: SMG

Programme Code: BCIDD
Originator Code: ROT
QMS Code:

Programme Title BUSCONNECTS DUBLIN CORE BUS CORRIDORS INFRASTRUCTURE WORKS			
Drawing Title RINGSEND TO CITY CENTRE CORE BUS CORRIDOR SCHEME IW WATER ASSET ALTERATIONS			
Drawing File Name BCIDD-ROT-UTL_UW-0016_XX_00-DR-CU-0012	Sheet Number 12 of 12	Status A	Rev M01

DO NOT SCALE USE FIGURED DIMENSIONS ONLY

\\nodub\p\U20191917117-02_WIP\08 MODELS\01 CAD\01 PLANNING\16 RINGSEND\BCIDD-ROT-UTL_UW-0016_XX_00-DR-CU-0001.dwg